



Intelligent Webforms

Interact with users using webforms

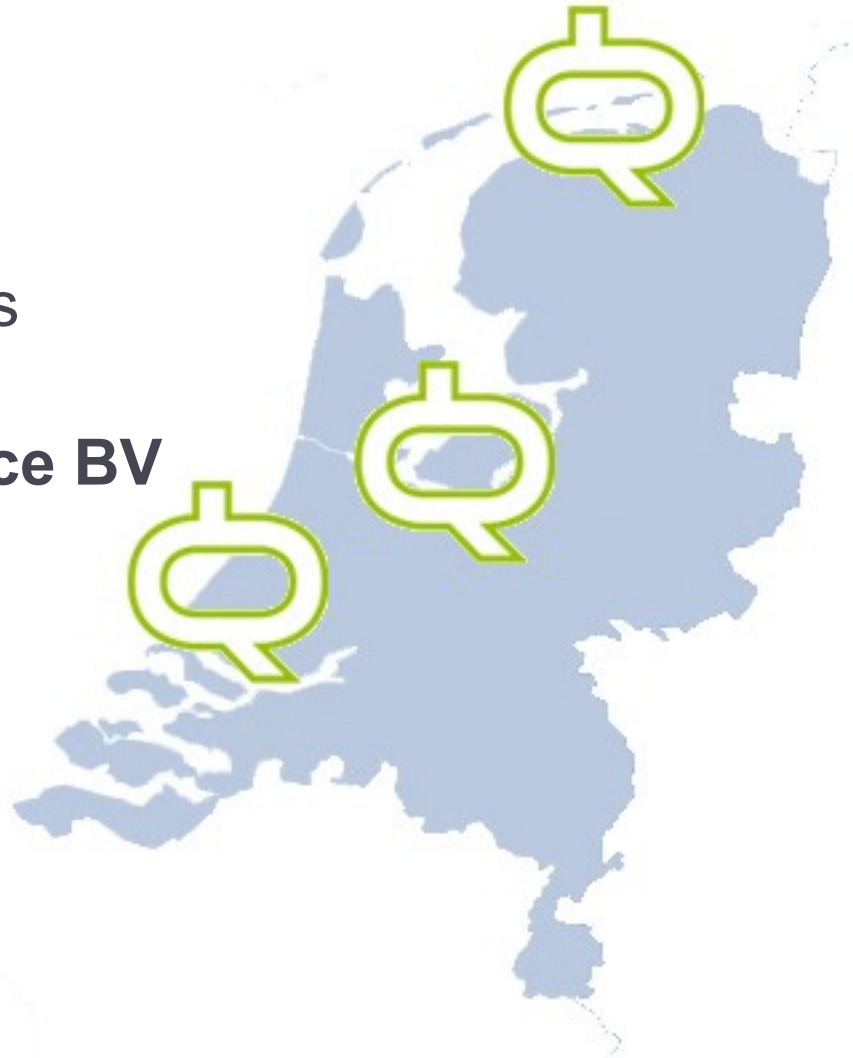
Program

- ▶ Introduction
- ▶ Why a new extension for creating webforms?
- ▶ The FormMaker framework concept
- ▶ The FormMaker workflow
- ▶ What can I do with the FormMaker
- ▶ What has been changed since T3CON06
- ▶ Demo 'FormMaker in action'
- ▶ Sneak preview developments
- ▶ Questions and Answers



Introduction

- ▶ **My name: Rogier Hosman**
Consultant & one of 3 founders
- ▶ **Drecomm Internet Intelligence BV**
 - ▶ Founded in 1999
 - ▶ 30+ full time employees
 - ▶ 18 TYPO3 developers
 - ▶ Using TYPO3 since version 3.3



Rabobank

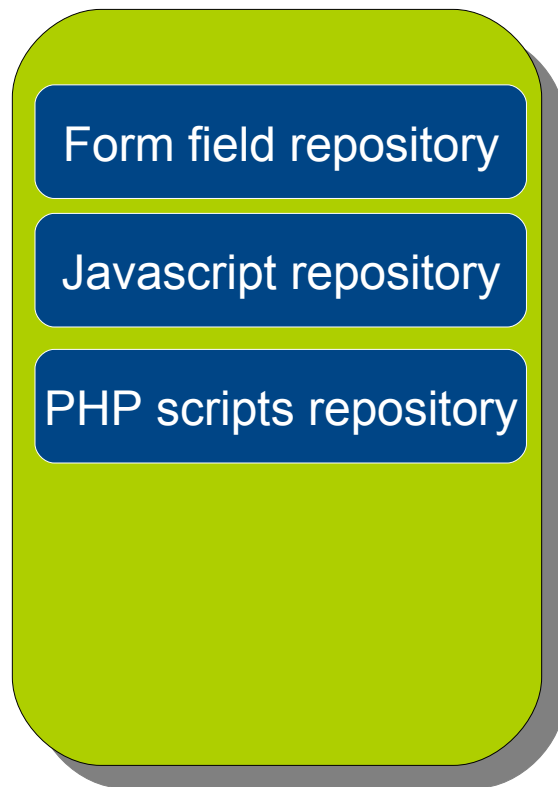


Why a new extension for creating webforms

- ▶ Multiple page webforms
- ▶ Using TYPO3 page & content operations:
 - ▶ Setting user rights within form objects
 - ▶ Start /Stop dates on fields
 - ▶ Copy /Paste elements /pages
 - ▶ Shortcut to pages /elements
 - ▶ Use insert record functions
 - ▶ Using back-end user rights for formobjects
 - ▶ Including TYPO3 content objects in forms, like images, movies etc
- ▶ Interaction with 3rd party software
- ▶ Reusable form components

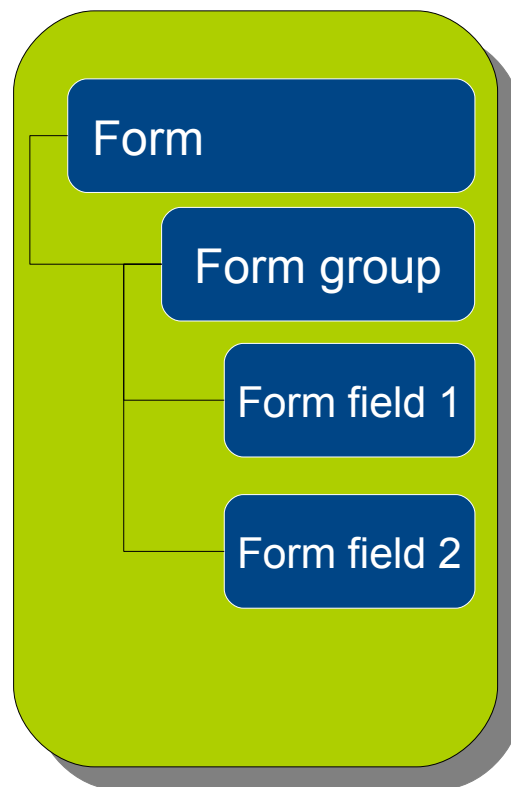


Concepts of the FormMaker framework

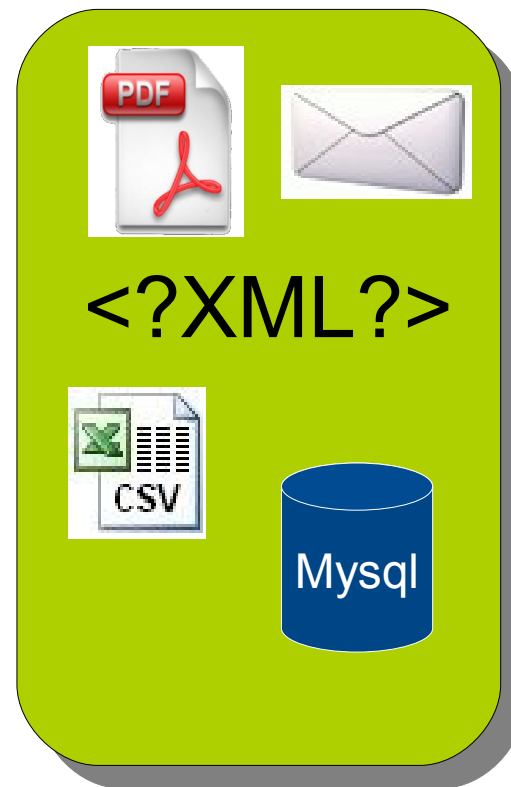


RE USABILITY

+



PREDEFINED
FORMGROUPS

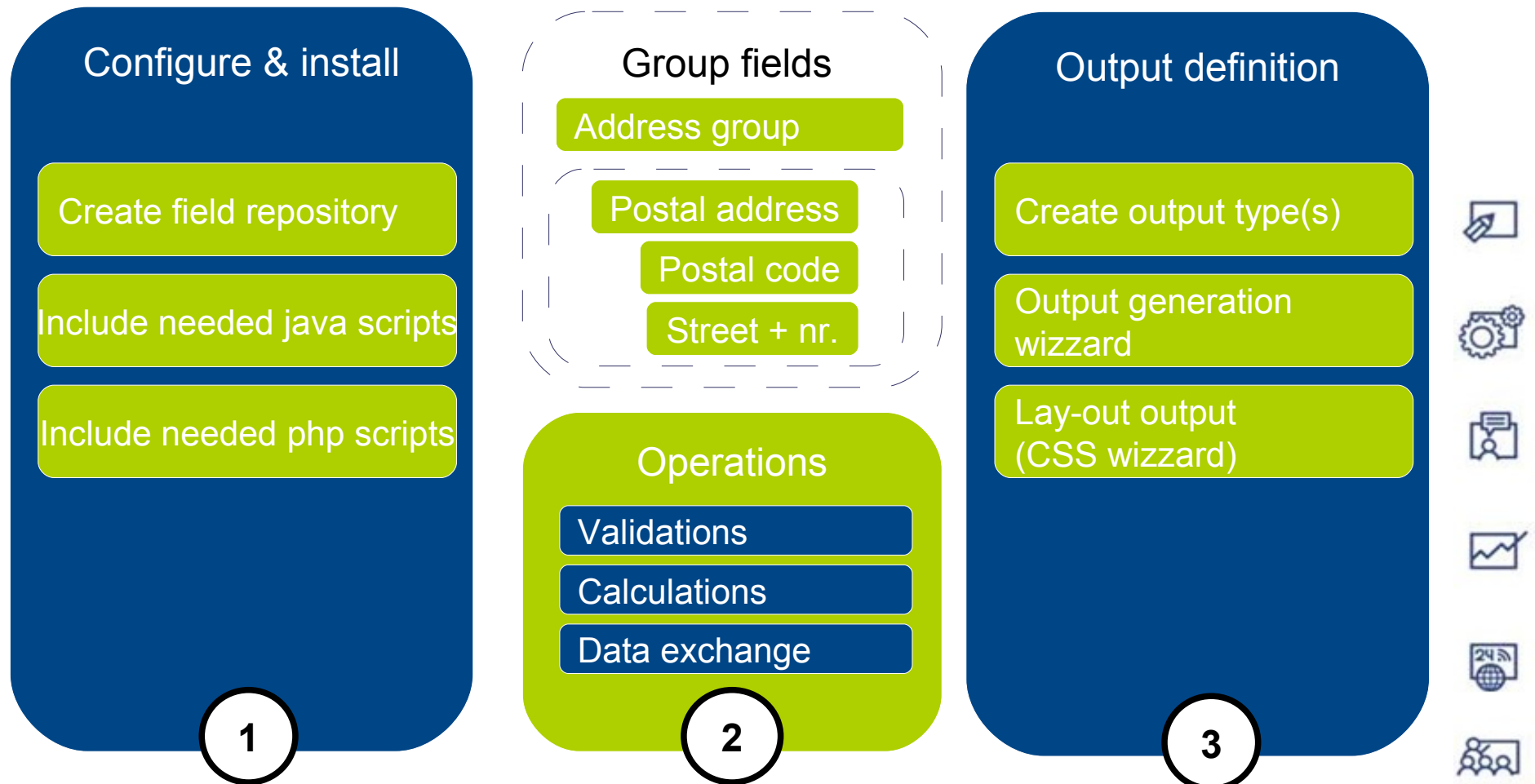


+

FLEXIBLE
OUTPUT



The workflow



What has been changed since 2006

- ▶ Import & export forms, fields and repositories to other Typo3 installations
- ▶ Automated summery generator
- ▶ Reporting tool
- ▶ Soap exchange possibilities



So what can I do with FormMaker

- ▶ Centralised control of all webforms on your site
- ▶ Re-use scripts, formobjects and form structures within one or more Typo3 installations
- ▶ Create user dependant output in any form you like
- ▶ Easily create forms using predefined structures, as simple as shortcutting to a page
- ▶ Make calculations based on user input
- ▶ Create a variety of output formats which can be distributed in various ways



Demo

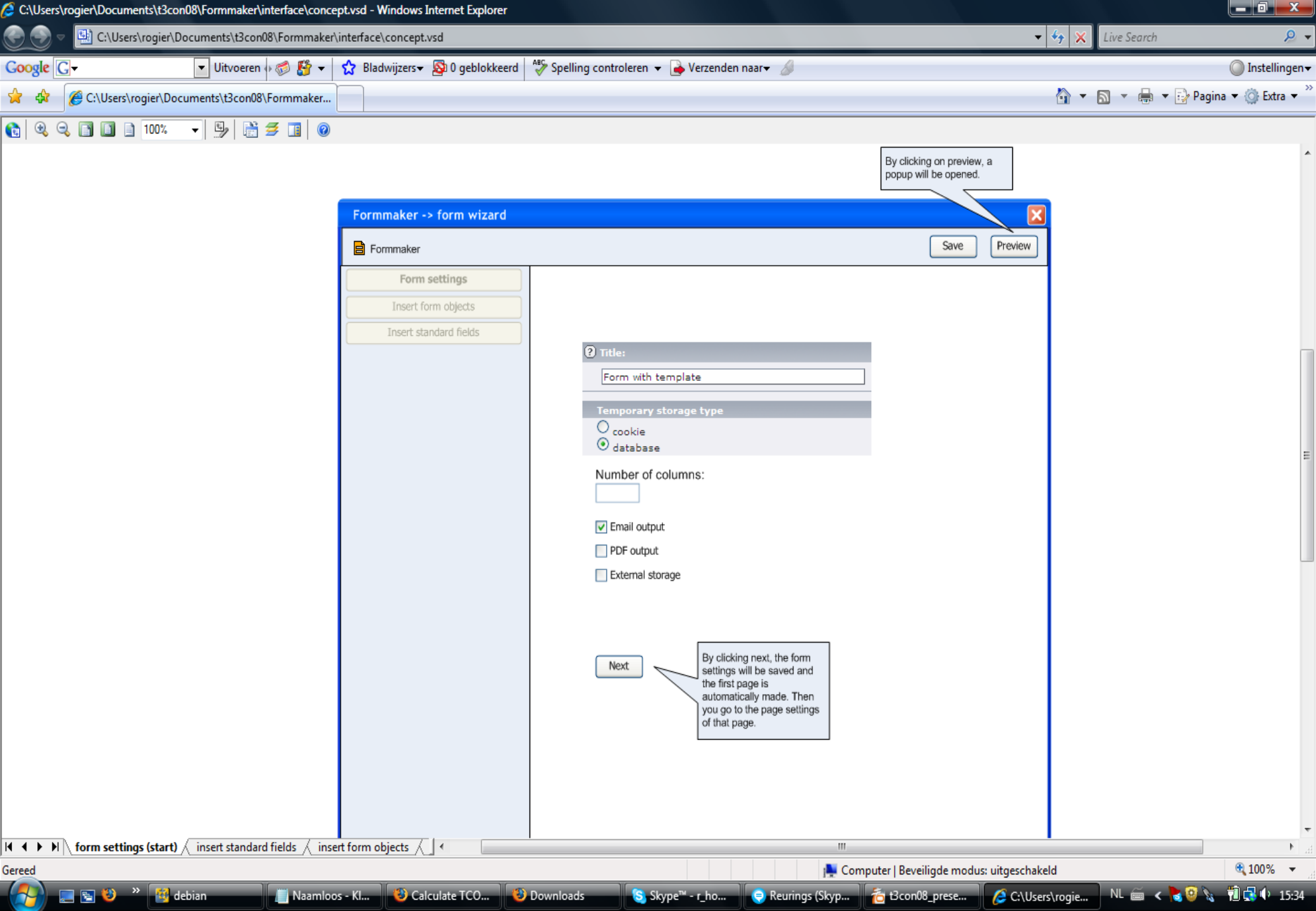
- ▶ Logics of the library
 - ▶ Formfields
 - ▶ Java scripts
 - ▶ PHP scripts
- ▶ Build formgroups
 - ▶ Multi level structure
- ▶ Enabling hidegroup functionality
- ▶ Adding javascripts (datepicker), validation
- ▶ Reporting

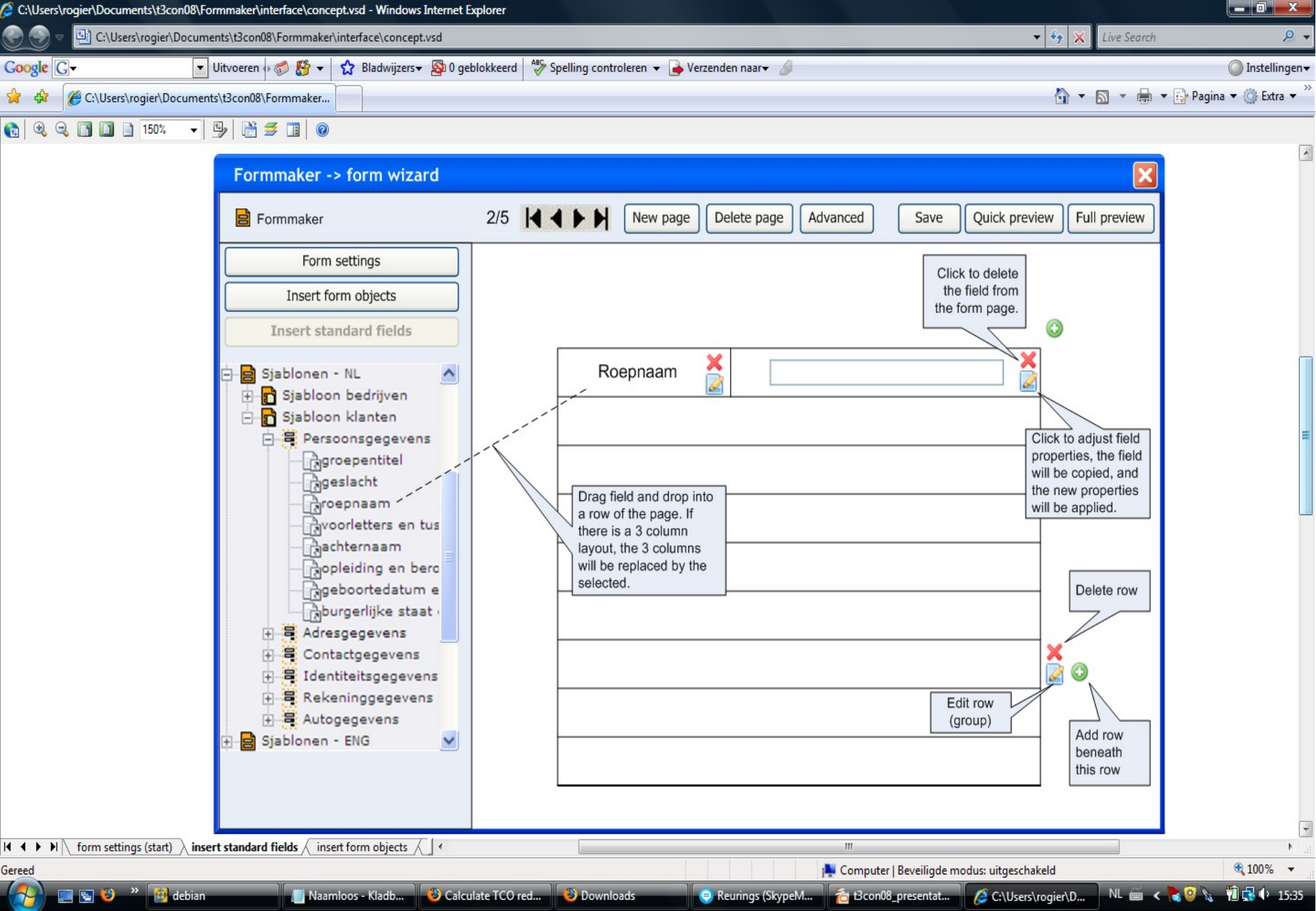


FormMaker developments

- ▶ Renewed back-end user interface
 - ▶ Front-end editing concept
 - ▶ Reduce the number of clicks needed to build forms
 - ▶ Improve acces to all functions & features







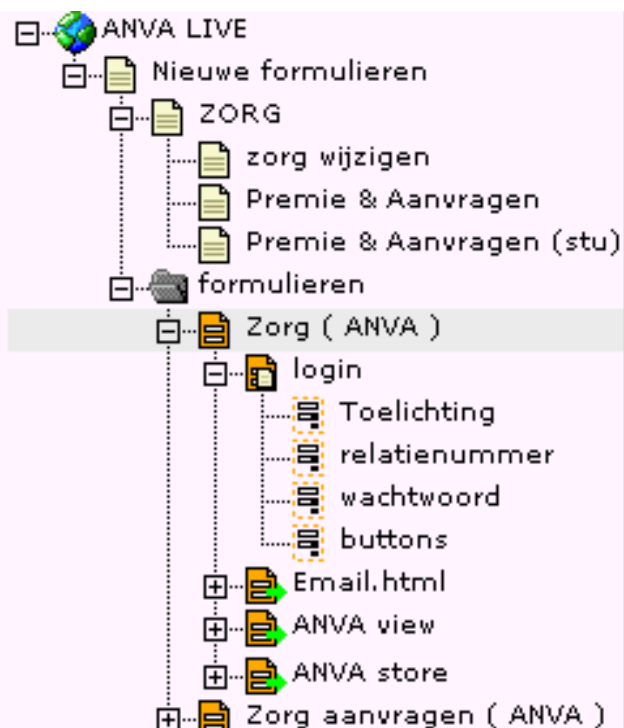
Any questions?




Other of our interesting developments...

- ▶ **Content Creation templates**
 - ▶ Create input templates based on typo3 content elements
- ▶ **Knowledgebase extension**
 - ▶ Taxonomy based tagging
 - ▶ Dynamic content relations based on tagging
- ▶ **Front-End language file editor**
 - ▶ Modify language markers at the front-end, no more search for labels






 [Reload the tree from server](#)



Path: /Nieuwe formulie.../formulieren/Zorg (ANVA)/

 Page [5645] - Zorg (ANVA)

Hide page:

 If this is checked, the page will be hidden on the website.


☐

Type:

 Select a page type affects whether the page represents a visible webpage or is used for other purposes.

Form

Title:

 Enter the title of the page or folder. You must enter a page title. The field is required. This is normally shown in the website navigation.

Zorg (ANVA)

Temporary storage type

☐ cookie

☒ database

Connections



ANVA LIVE

- Nieuwe formulieren
 - ZORG
 - zorg wijzigen
 - Premie & Aanvragen
 - Premie & Aanvragen (stu)
- formulieren
 - Zorg (ANVA)
 - login
 - Toelichting
 - relatienummer
 - wachtwoord
 - buttons
 - Email.html
 - ANVA view
 - ANVA store
 - Zorg aanvragen (ANVA)

Reload the tree from server

Connection wizard

ANVA LIVE Connections ▾

Path:

CONNECTION:

Name ANVA

ID

Protocol

Method

Address

ANVA LIVE

- Nieuwe formulieren
- ZORG
 - zorg wijzigen
 - Premie & Aanvragen
 - Premie & Aanvragen (stu)
- formulieren
 - Zorg (ANVA)
 - login
 - Toelichting
 - relatienummer
 - wachtwoord
 - buttons
 - Email.html
 - ANVA view
 - ANVA store
 - Zorg aanvragen (ANVA)

Reload the tree from server

Connection wizard

ANVA LIVE Mappings

Path:

MAPPING:

Name

Type

PHP

Path: /

INSTRUCTIONS:

Here you can add, modify, hide or remove PHP functions using plain PHP coding that can be used with expressions throughout the forms in this TYPO3 installation.

PHP #248:

Name:

ANVA get

Description:

Converts ANVA response XML to array and stores it in current session

Parameters:

values,index

The function name and parameter list do not have to be included in the PHP code.

PHP:

```
$rs = Array();
$rID = $index['RELATIE'][0];

$i = $rID;

$sID = Array(
    'RELATIE' => 0,
    'POLIS' => -1,
    'POLISDEKKING' => -1,
    'PAKKET' => -1,
    'PAKKETPOLIS' => -1,
    'PAKKETPOLISDEKKING' => -1
);

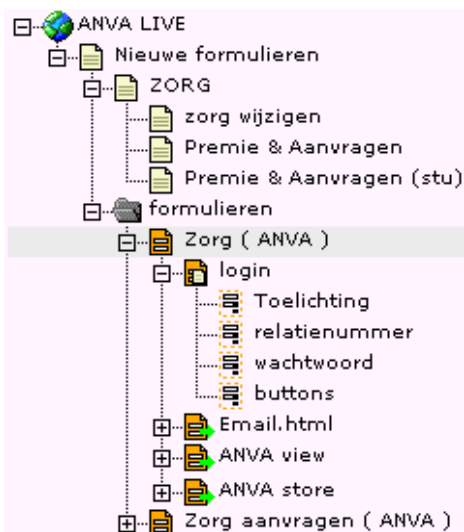
$category = Array('RELATIE');
while (
    count($index) > 3 && (
        $values[$i]['tag'] != 'RELATIE' || (
            $values[$i]['type'] != 'close' &&
            $values[$i]['type'] != 'complete'
        )
    )
) {
    switch ($values[$i]['type']) {
        case 'open':
            switch ($values[$i]['tag']) {
                case 'PAKKETTEN':
                    $category[] = 'PAKKET';
                    break;
                case 'POLISSEN':
                    switch ($category[count($category)-1]) {
                        case 'RELATIE':
                            $category[] = 'POLIS';
```

Hidden:

☐

Locked:

☐



Reload the tree from server



field [menu]

Path: /Nieuwe formulie.../formulieren/Zorg (ANVA)/login/wachtwoord/

Pagecontent [10917] - field

Type:

Select the kind of page content this element represents. New options will appear when you save the record.

Insert plugin

Language:

Default

Columns:

[FORMMAKER] Column 2

Before:

☐

After:

☐

Frame:

Index:

☒

To top:

☐

Header:

Enter a headline for the content element.

password

Align:

Type:

Normal

Link:

Date:

Plugin:

Select a plugin to insert.

Form Maker field

Fieldtype

Wachtwoord

Fieldtype settings

Size = 30

Class =

Maxlength =

Style =



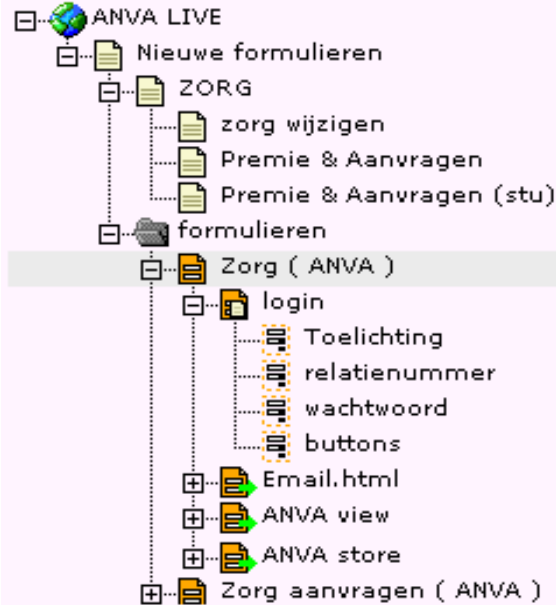
Input



Conditions



Javascripts



Reload the tree from server



Path: /Nieuwe formulie.../formulieren/Zorg (ANVA)/ANVA view/

Page [5711] - ANVA view

Hide page:

If this is checked, the page will be hidden on the website.

☐

Type:

Select a page type affects whether the page represents a visible webpage or is used for other purposes.

Form output

Title:

Enter the title of the page or folder. You must enter a page title. The field is required. This is normally shown in the website navigation.

ANVA view

Output type

XML

Template

request_01.xml

HTML HTM TMPL XML TXT

Bladeren...



Template settings

Stylesheet

CSS

Bladeren...

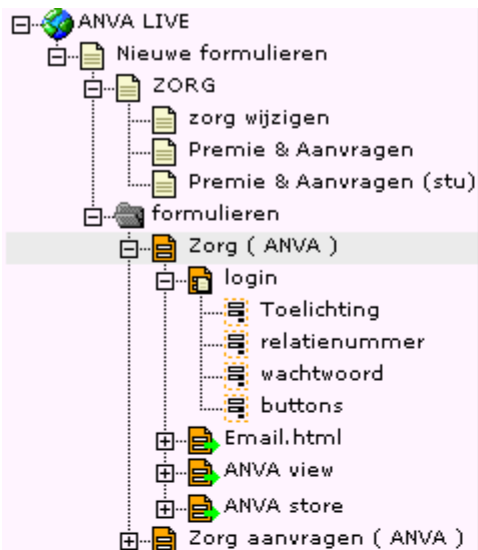



Select stylesheet(s)

Selected:

Items:

academica.css
form_style.css
form_style_2.css
intermediair.css
style.css



 Reload the tree from server



File editor

ANVA LIVE

Path:




FILE EDITOR:

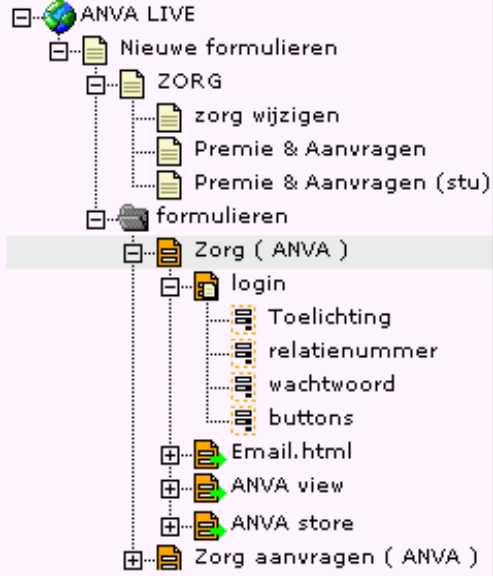
```
<PAKKETTEN>
  <PAKKET>
    <PK/>
    <L NR="*"/>
    <POLISSEN>
      <POLIS>
        <PK/>
        <L NR="*"/>
        <DEKKINGEN>
          <DEKKING>
            <PK/>
            <L NR="*"/>
          </DEKKING>
        </DEKKINGEN>
      </POLIS>
    </POLISSEN>
    <WHERE>
      <L NR="10001" EQ="N210"/>
      <L NR="10141" EQ="1000"/>
      <L NR="10142" GE="1250" />
      <L NR="10142" LE="1254" />
    </WHERE>
  </POLISSEN>
</PAKKET>
<WHERE>
  <L NR="61000" EQ="30"/>
</WHERE>
</PAKKETTEN>
</RELATIE>
<WHERE>

  <!--WHERE1-->
  <L NR="###FIELD_ID###" EQ="###FIELD_VALUE###"/>
  <!--WHERE1-->

  <!--WHERE2-->
  <L NR="###FIELD_ID###" EQ="###FIELD_VALUE###"/>
  <!--WHERE2-->

</WHERE>
</RELATIES>
</PARAM>
</FUNCTIONS>
```



Reload the tree from server



ANVA LIVE

Path:

Template settings wizard

TEMPLATE SETTINGS:

```
<POLIS>
  <PK/>
  <L NR="*"/>
  <DEKKINGEN>
    <DEKKING>
      <PK/>
      <L NR="*"/>
    </DEKKING>
  </DEKKINGEN>
</POLIS>
<WHERE>
  <L NR="10001" EQ="N210"/>
  <L NR="10141" EQ="1000"/>
  <L NR="10142" GE="1250" />
  <L NR="10142" LE="1254" />
</WHERE>
</POLISSEN>
</PAKKET>
<WHERE>
  <L NR="61000" EQ="30"/>
</WHERE>
</PAKKETTEN>
</RELATIE>
<WHERE>

<!--WHERE1: Query WHERE relatienummer -->
<L NR="[FORMMAKER] Column 1" " EQ=" "[FORMMAKER] Column 2" />
<!--WHERE1-->

<!--WHERE2: -->
<L NR=" " " EQ=" " />
<!--WHERE2-->

</WHERE>
</RELATIES>
</PARAM>
</FUNCTION>
</REQUEST>
</DATA>
</AWACS>
```



Source mode ☒

Autorefresh ☒